

# GRANDE SALLE PLANTATION

AVEC GRID  
AVEC GRADIN

MIS À JOUR: février 2018

PAGE: 1/6

PRODUCTION:

LEGENDE	Utilisé
Leko ETC S4 750W	
19°	
26°	
36°	
50°	
R.Juliat 1k 16/35°	
Fresnel Strand 1k	
Fresnel Strand 2k	
Fresnel Strand 5k	
PAR 64 1k	
Wide	
Medium	
Narrow	
Very Narrow	

Dir. technique: Jenny Huot  
T: 514 521 4252  
C: dt@usine-c.com

1345 avenue Lalonde  
Montréal, H2L 5A9



comme point de référence

Trans.

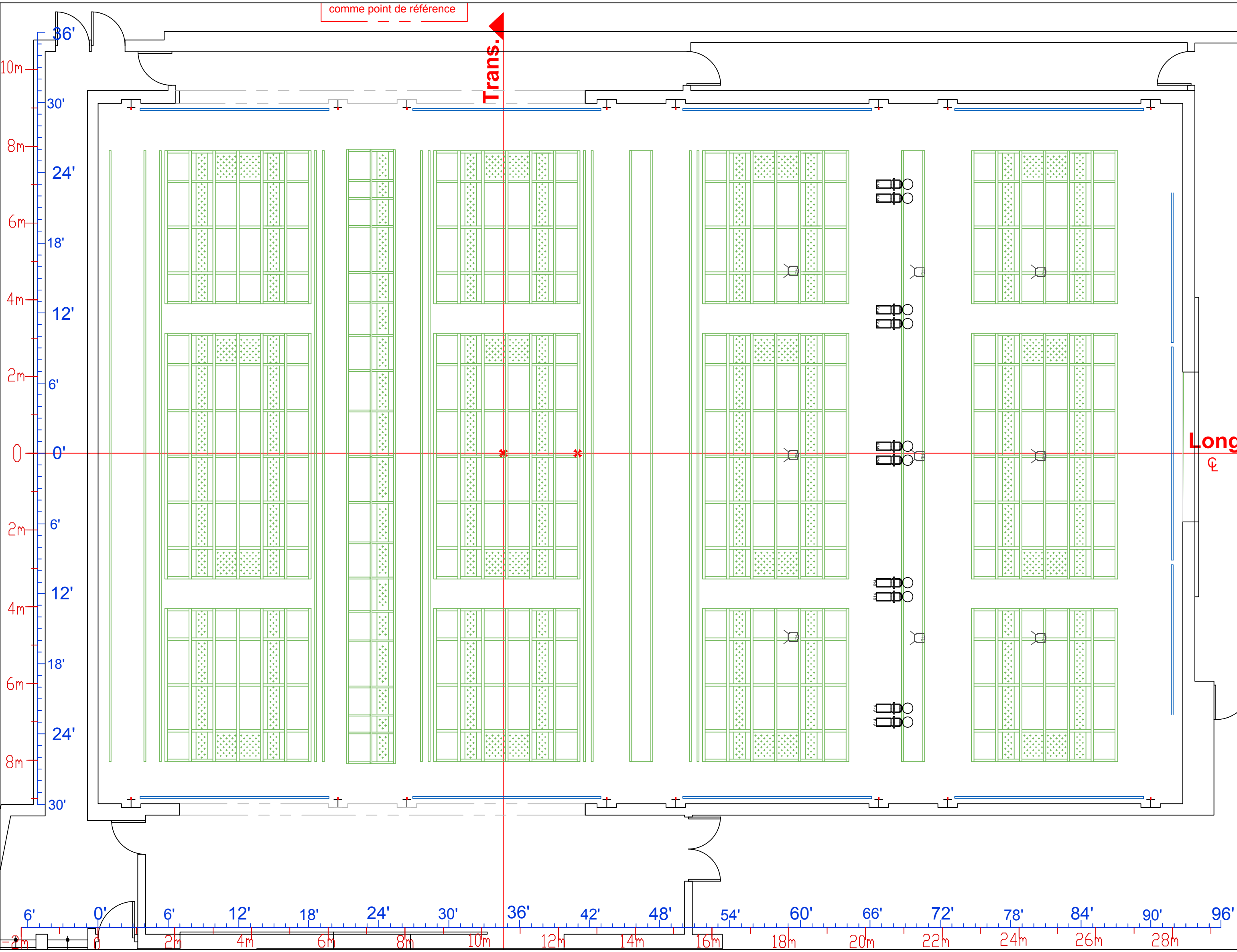
# GRANDE SALLE PLANTATION

AVEC GRID  
SANS GRADIN

MIS À JOUR: février 2018

PAGE: 2/6

PRODUCTION:



LEGENDE	Utilisé
Leko ETC S4 750W	
19°	
26°	
36°	
50°	
R.Juliat 1k 16/35°	
Fresnel Strand 1k	
Fresnel Strand 2k	
Fresnel Strand 5k	
PAR 64 1k	
Wide	
Medium	
Narrow	
Very Narrow	

Dir. technique: Jenny Huot

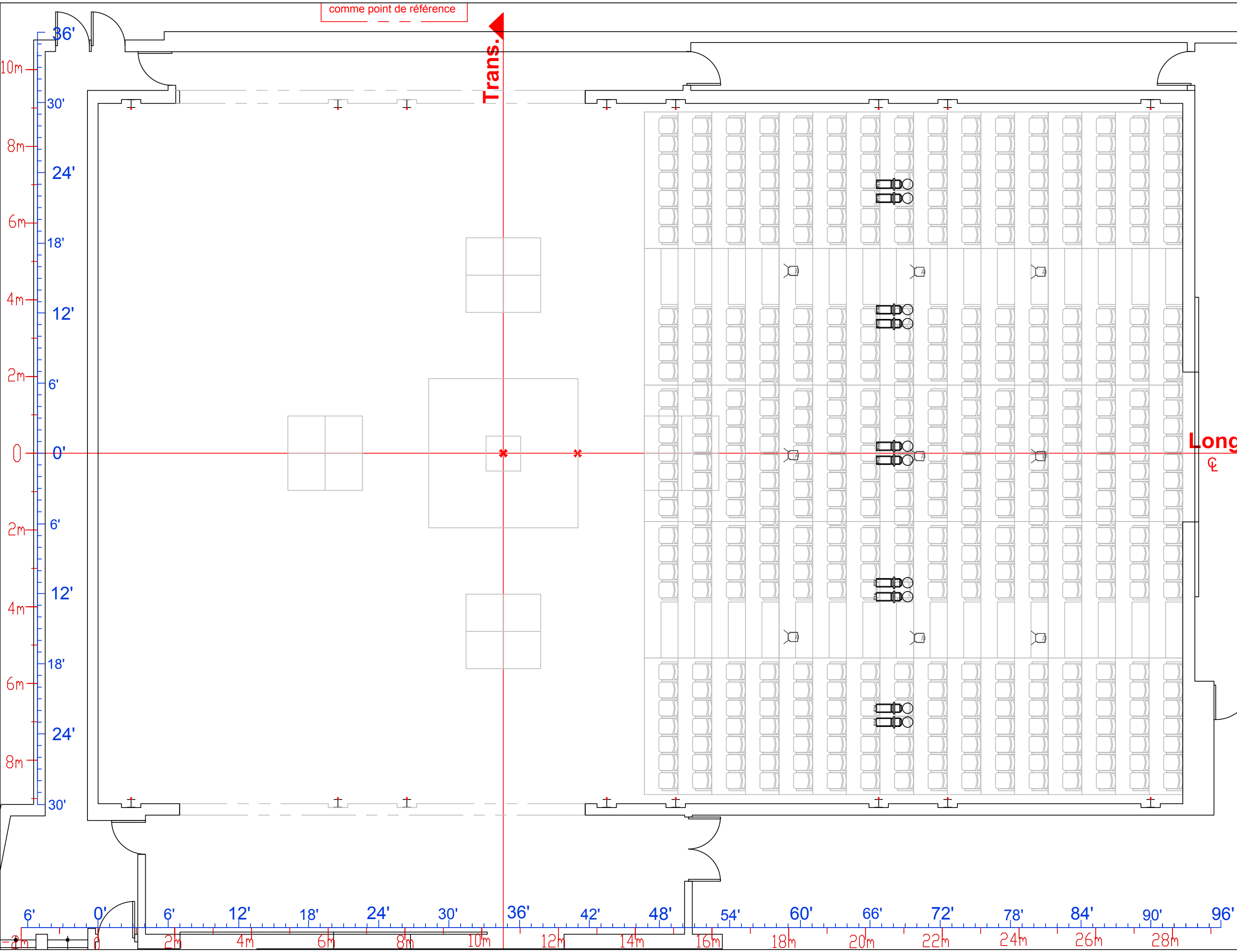
T: 514 521 4252

C: dt@usine-c.com

1345 avenue Lalonde

Montréal, H2L 5A9





# GRANDE SALLE PLANTATION

SANS GRID  
AVEC GRADIN

MIS À JOUR: février 2018

PAGE: 3/6

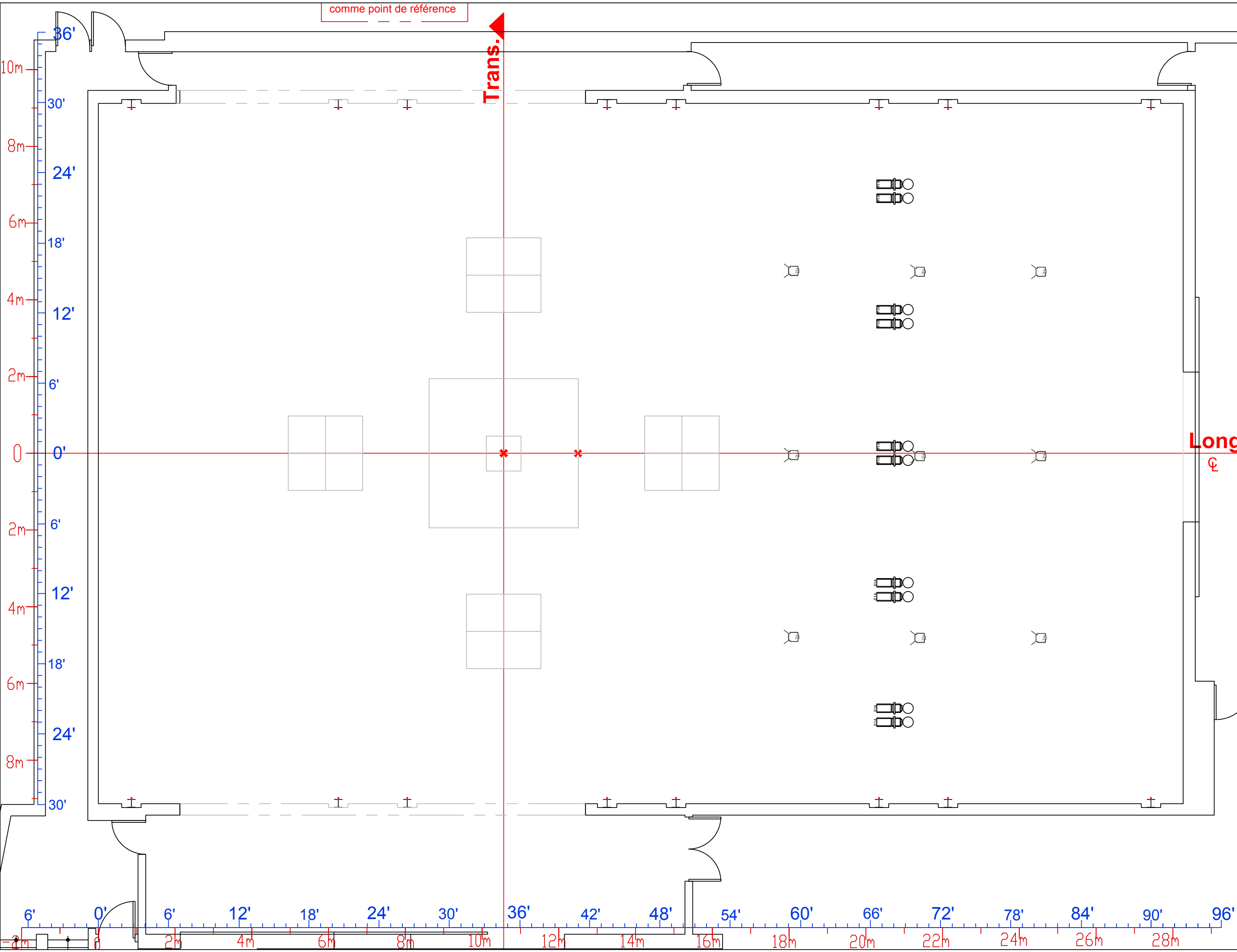
PRODUCTION:

LEGENDE	Utilisé
Leko ETC S4 750W	
19°	
26°	
36°	
50°	
R.Juliat 1k 16/35°	
Fresnel Strand 1k	
Fresnel Strand 2k	
Fresnel Strand 5k	
PAR 64 1k	
Wide	
Medium	
Narrow	
Very Narrow	

Dir. technique: Jenny Huot  
T: 514 521 4252  
C: dt@usine-c.com

1345 avenue Lalonde  
Montréal, H2L 5A9





comme point de référence

Trans.

Long

# GRANDE SALLE PLANTATION

SANS GRADIN  
SANS GRID

MIS À JOUR: février 2018

PAGE: 4/6

PRODUCTION:

LEGENDE	Utilisé
Leko ETC S4 750W	
19°	
26°	
36°	
50°	
R. Juliat 1k 16/35°	
Fresnel Strand 1k	
Fresnel Strand 2k	
Fresnel Strand 5k	
PAR 64 1k	
Wide	
Medium	
Narrow	
Very Narrow	

Dir. technique: Jenny Huot  
T: 514 521 4252  
C: dt@usine-c.com

1345 avenue Lalonde  
Montréal, H2L 5A9



# GRANDE SALLE

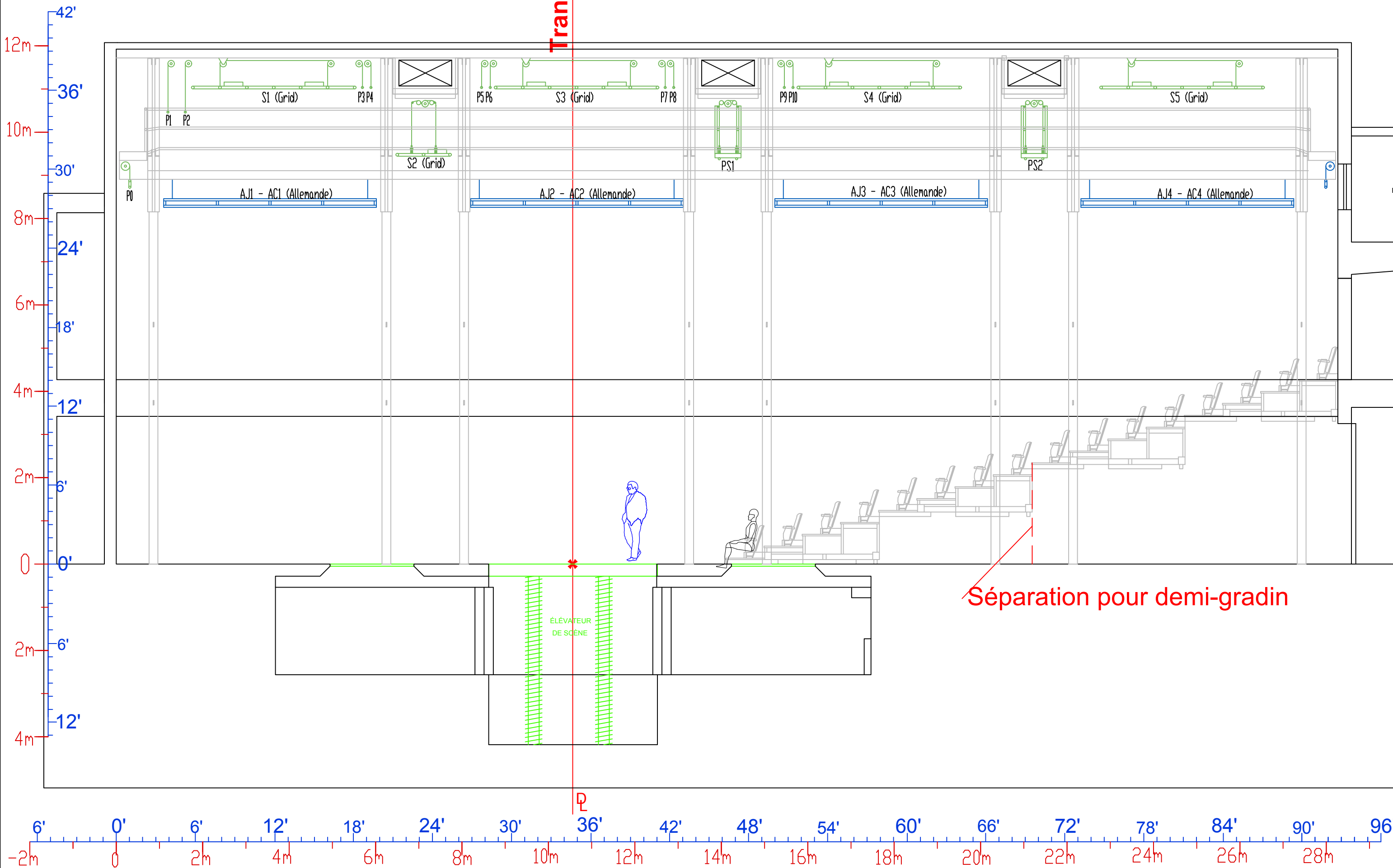
## COUPE LONG.

DEMI GRADINS  
AVEC GRID

MIS À JOUR: février 2018

PAGE: 5/6

PRODUCTION:



LEGENDE	Utilisé
Leko ETC S4 750W	
19°	
26°	
36°	
50°	
R.Juliat 1k 16/35°	
Fresnel Strand 1k	
Fresnel Strand 2k	
Fresnel Strand 5k	
PAR 64 1k	
Wide	
Medium	
Narrow	
Very Narrow	

Dir. technique: Jenny Huot  
T: 514 521 4252  
C: dt@usine-c.com

1345 avenue Lalonde  
Montréal, H2L 5A9



# GRANDE SALLE

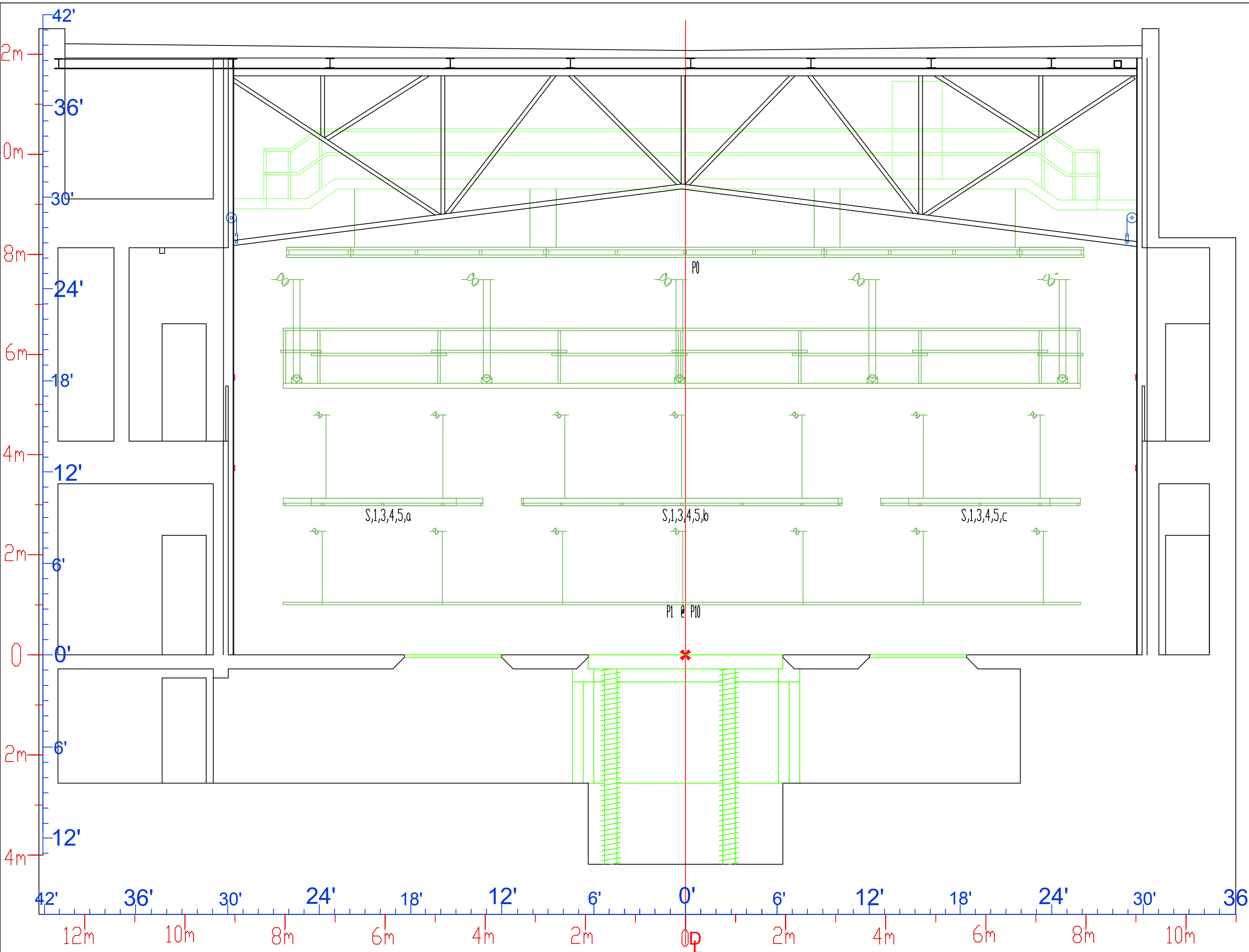
## COUPE TRANS.

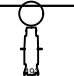
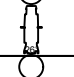
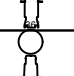
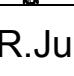
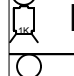

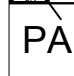
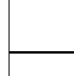
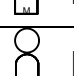
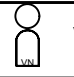
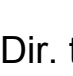

DEMI GRADINS  
AVEC GRID

MIS À JOUR: février 2018

PAGE: 6/6

PRODUCTION:



LEGENDE	Utilisé
Leko ETC S4 750W	
 19°	
 26°	
 36°	
 50°	
 R.Juliat 1k 16/35°	
 Fresnel Strand 1k	
 Fresnel Strand 2k	
 Fresnel Strand 5k	
PAR 64 1k	
 Wide	
 Medium	
 Narrow	
 Very Narrow	

Dir. technique: Jenny Huot  
T: 514 521 4252  
C: dt@usine-c.com

1345 avenue Lalonde  
Montréal, H2L 5A9

